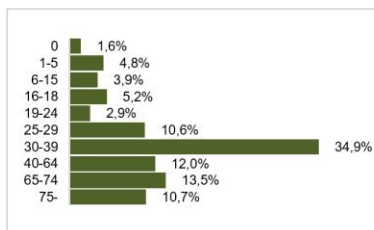
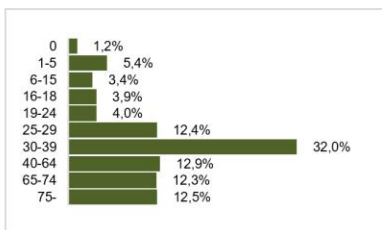
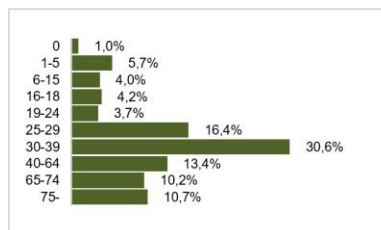
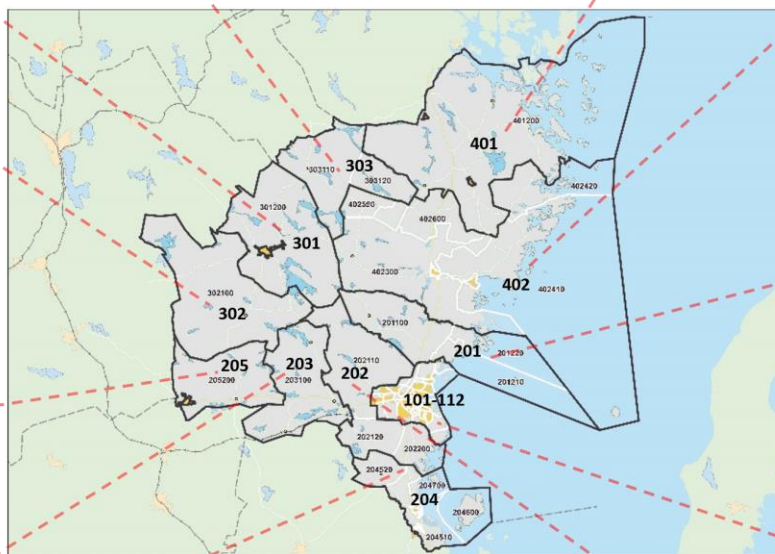
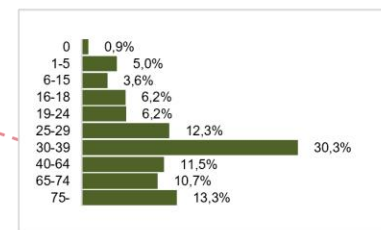
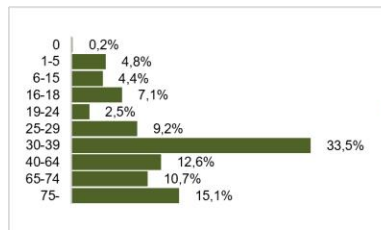
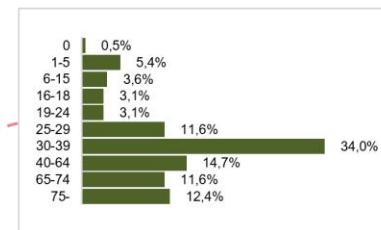
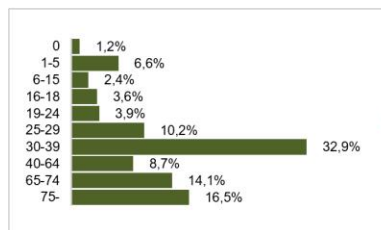
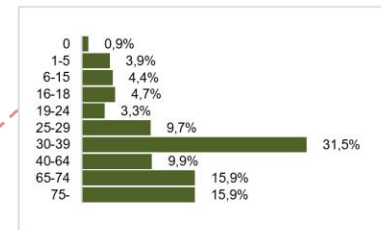
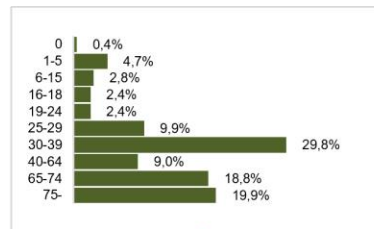
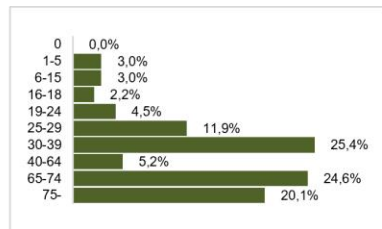
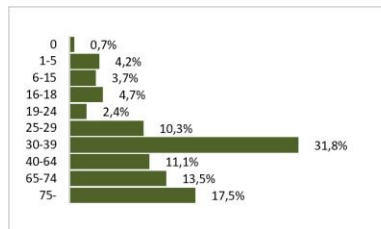


# Oskarshamns kommun, efter ålder

Hela kommunen, andel i respektive åldersklass, 31 december 2023

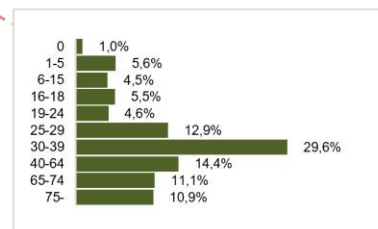
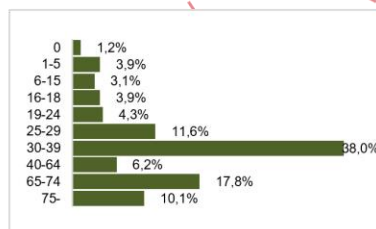
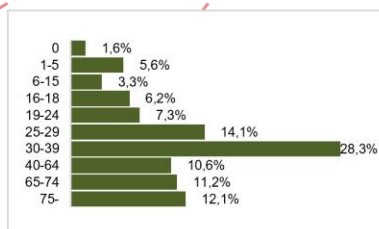
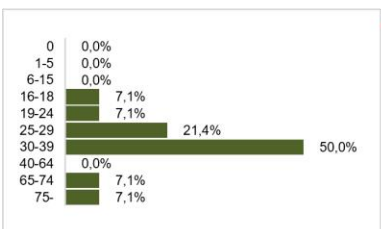
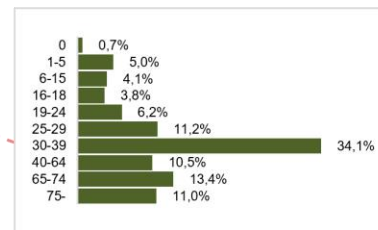
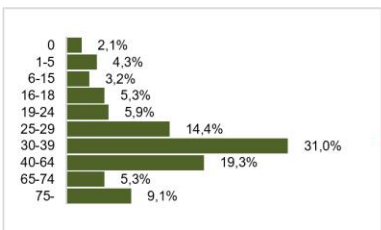
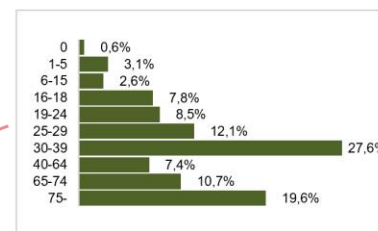
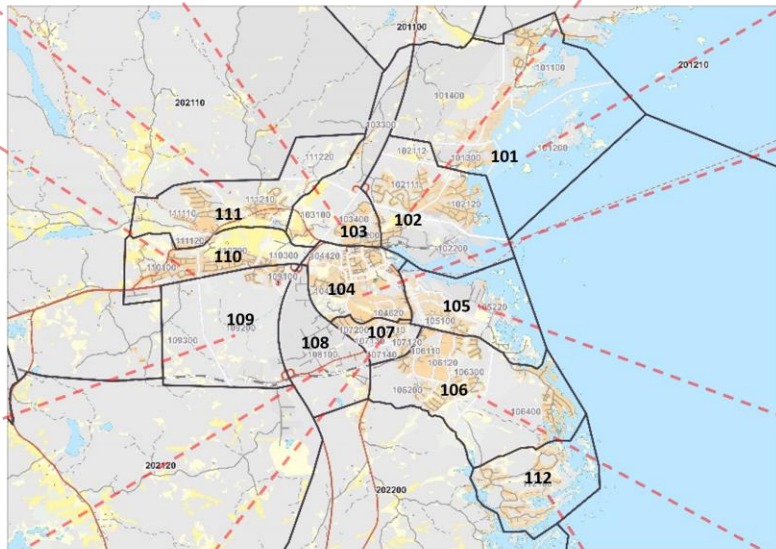
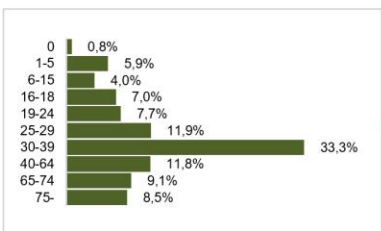
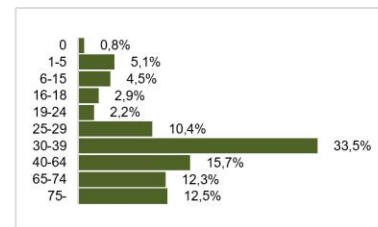
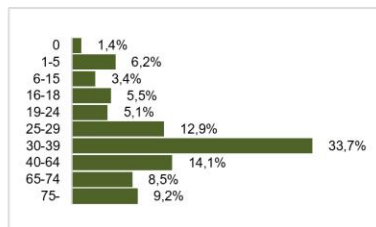
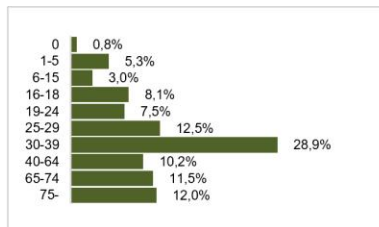
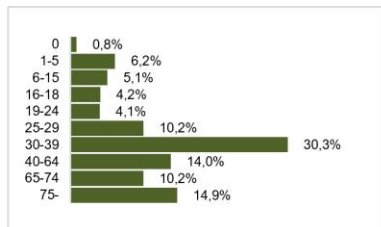


## 1.3.4 Åldersstruktur inom delområden, Oskarshamns kommun (nivå 3)

Källor: SCB, BEFPAK-Områdesbeskrivningar  
PeO Hossmark, 2024-03-20

# Oskarshamns kommun, efter ålder

Centralorten, andel i respektive åldersklass, 31 december 2023



## 1.3.4 Åldersstruktur inom delområden, Oskarshamns kommun (nivå 3)

Källor: SCB, BEFPAK-Områdesbeskrivningar  
PeO Hossmark, 2024-03-20

# Oskarshamns kommun, efter ålder

Andel i respektive åldersklass, 31 december 2023

Område	0 år	1-5 år	6-15 år	16-18 år	19-24 år	25-29 år	30-39 år	40-64 år	65-74 år	75+ år
101	0,84%	5,11%	4,55%	2,88%	2,23%	10,40%	33,52%	15,69%	12,26%	12,53%
102	1,38%	6,15%	3,35%	5,51%	5,08%	12,95%	33,72%	14,11%	8,52%	9,25%
103	0,84%	5,32%	3,05%	8,13%	7,53%	12,49%	28,93%	10,16%	11,54%	12,01%
104	0,59%	3,06%	2,61%	7,79%	8,49%	12,10%	27,62%	7,38%	10,73%	19,62%
105	0,69%	4,99%	4,13%	3,79%	6,20%	11,19%	34,08%	10,50%	13,43%	11,02%
106	0,97%	5,60%	4,47%	5,46%	4,58%	12,94%	29,64%	14,40%	11,07%	10,87%
107	1,58%	5,55%	3,29%	6,17%	7,27%	14,05%	28,31%	10,56%	11,17%	12,06%
108	0,00%	0,00%	0,00%	7,14%	7,14%	21,43%	50,00%	0,00%	7,14%	7,14%
109	2,14%	4,28%	3,21%	5,35%	5,88%	14,44%	31,02%	19,25%	5,35%	9,09%
110	0,79%	5,89%	4,02%	6,97%	7,69%	11,85%	33,33%	11,78%	9,12%	8,55%
111	0,82%	6,23%	5,12%	4,15%	4,08%	10,16%	30,34%	14,02%	10,16%	14,91%
112	1,16%	3,88%	3,10%	3,88%	4,26%	11,63%	37,98%	6,20%	17,83%	10,08%
201	0,52%	5,41%	3,61%	3,09%	3,09%	11,60%	34,02%	14,69%	11,60%	12,37%
202	1,59%	4,78%	3,91%	5,21%	2,89%	10,56%	34,88%	12,01%	13,46%	10,71%
203	1,00%	5,72%	3,98%	4,23%	3,73%	16,42%	30,60%	13,43%	10,20%	10,70%
204	1,23%	5,44%	3,39%	3,92%	3,98%	12,40%	31,99%	12,87%	12,34%	12,46%
205	0,21%	4,81%	4,39%	7,11%	2,51%	9,21%	33,47%	12,55%	10,67%	15,06%
301	0,72%	4,16%	3,71%	4,70%	2,44%	10,31%	31,83%	11,12%	13,47%	17,54%
302	1,20%	6,59%	2,40%	3,59%	3,89%	10,18%	32,93%	8,68%	14,07%	16,47%
303	0,00%	2,99%	2,99%	2,24%	4,48%	11,94%	25,37%	5,22%	24,63%	20,15%
401	0,43%	4,71%	2,78%	2,36%	2,36%	9,85%	29,76%	8,99%	18,84%	19,91%
402	0,94%	3,94%	4,36%	4,72%	3,25%	9,66%	31,50%	9,87%	15,91%	15,85%
999	0,00%	8,33%	10,42%	8,33%	8,33%	22,92%	20,83%	18,75%	2,08%	0,00%
Restförda	0,96%	13,25%	1,20%	3,13%	8,92%	20,24%	26,02%	12,05%	11,08%	3,13%

## 1.3.4 Åldersstruktur inom delområden, Oskarshamns kommun (nivå 3)

Källor: SCB, BEFPAK-Områdesbeskrivningar  
PeO Hossmark, 2024-03-20